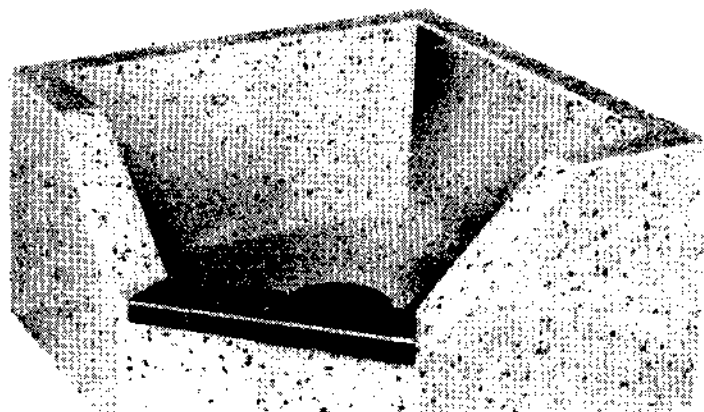


# TREVI MODEL:

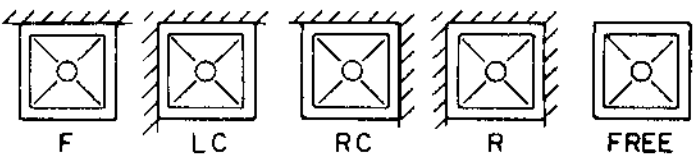
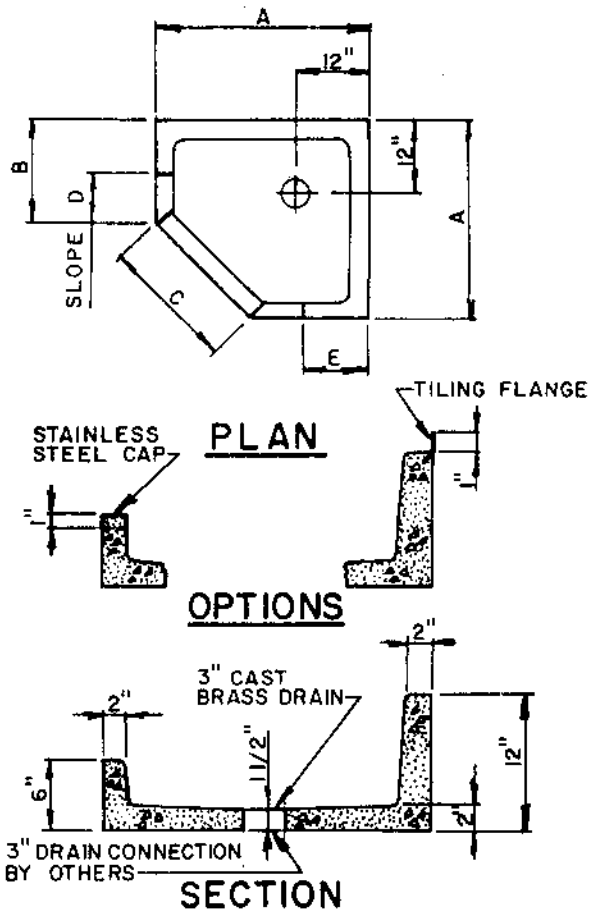
# NEO-ANGLE - MODEL\* 612

## PRECAST TERRAZZO MOPRECEPTOR ARCHITECTURAL SPECIFICATIONS

MOP RECEPTORS SHALL BE PRECAST TERRAZZO AS MANUFACTURED BY CREATIVE INDUSTRIES TERRAZZO PRODUCTS, INC. RECEPTORS SHALL BE CAST AS A ONE PIECE UNIT WITH WIRE MESH REINFORCING IF SPECIFIED. A THREE INCH DRAIN BODY SHALL BE CAST INTEGRAL. TERRAZZO SHALL BE GENUINE BLACK AND WHITE MARBLE CHIPS, CAST IN WHITE PORTLAND CEMENT AND SHALL PROVIDE A COMPRESSIVE STRENGTH OF NOT LESS THAN 5,000 PSI SEVEN DAYS AFTER CASTING. TERRAZZO SURFACES SHALL BE GROUND AND POLISHED WITH ALL AIR HOLES AND/OR PITS GROUTED AND SEALED. ANY OTHER COLOR COMBINATION, SIZE OR DRAIN LOCATION DESIRED CAN BE SUPPLIED AT ADDITIONAL COST. \*OPTIONAL- ONE INCH STAINLESS STEEL EDGE CAP TO BE CAST INTEGRAL ON EXPOSED SIDES, AS SPECIFIED. \*\*OPTIONAL- GALVANIZED STEEL FLANGES NOT TO EXTEND LESS THAN ONE INCH ABOVE SHOULDER.



**PERSPECTIVE**



**STYLES**

**OPTIONS:**

TILING FLANGE	STAINLESS STEEL CAPS
1F (1 FLANGE)	1SS (1 CAP)
2F (2 FLANGES)	2SS (2 CAPS)
3F (3 FLANGES)	3SS (3 CAPS)
	4SS (4 CAPS)

**IMPORTANT**

THIS IS AN APPROVAL DRAWING, ALL DIMENSIONS ARE TO BE VERIFIED AND AN APPROVED COPY OF THIS PRINT IS TO BE RETURNED TO CREATIVE INDUSTRIES TERRAZZO PRODUCTS BEFORE PRODUCTION CAN PROCEED.

MODEL NUMBER	A	B	C	D	E	MOPRECEPTOR APPROVAL	
MCN024-612	24"	15"	12 1/2"	8 1/4"	8"	MODEL NO.	
MCN032-612	32"	16"	22 5/8"	8 1/2"	10"	SIZE REQUIRED	
MCN036-612	36"	18"	25 7/16"	8 3/4"	12"	JOB	
						ARCHITECT	
						ENGINEER	
						NO. REQUIRED	
						APPROVED BY	
						DATE	

# CREATIVE INDUSTRIES TERRAZZO PRODUCTS, INC.

1753 NORTH SPAULDING CHICAGO, ILLINOIS 60647 (773) 235-9088 OR 235-9089