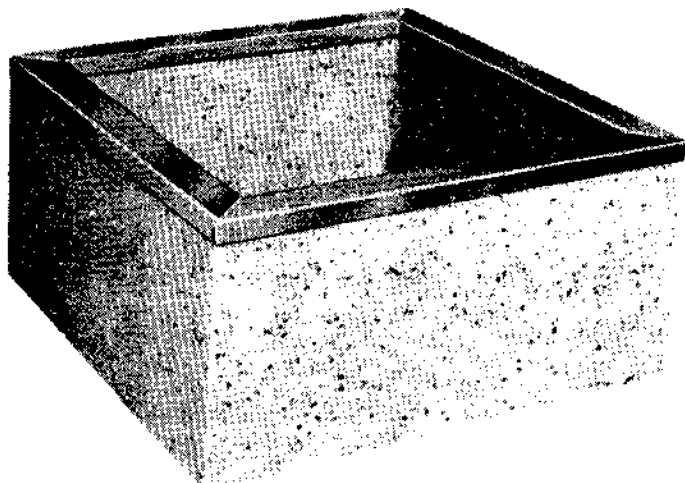


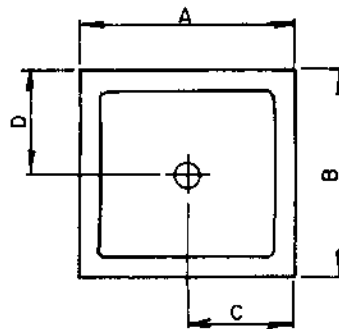
# SAN MARINO MODEL: SQUARE AND RECTANGULAR-MODEL #1200

## PRECAST TERRAZZO MOPRECEPTOR ARCHITECTURAL SPECIFICATIONS

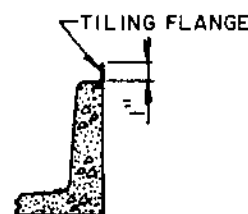
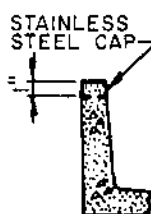
MOP RECEPTORS SHALL BE PRECAST TERRAZZO AS MANUFACTURED BY CREATIVE INDUSTRIES TERRAZZO PRODUCTS, INC. RECEPTORS SHALL BE CAST AS A ONE PIECE UNIT WITH WIRE MESH REINFORCING IF SPECIFIED. A THREE INCH DRAIN BODY SHALL BE CAST INTEGRAL. TERRAZZO SHALL BE GENUINE BLACK AND WHITE MARBLE CHIPS, CAST IN WHITE PORTLAND CEMENT AND SHALL PROVIDE A COMPRESSIVE STRENGTH OF NOT LESS THAN 5,000 PSI SEVEN DAYS AFTER CASTING. TERRAZZO SURFACES SHALL BE GROUND AND POLISHED WITH ALL AIR HOLES AND/OR PITS GROUTED AND SEALED. ANY OTHER COLOR COMBINATION, SIZE OR DRAIN LOCATION DESIRED CAN BE SUPPLIED AT ADDITIONAL COST. \*OPTIONAL- ONE INCH STAINLESS STEEL EDGE CAP TO BE CAST INTEGRAL ON EXPOSED SIDES, AS SPECIFIED. \*\*OPTIONAL- GALVANIZED STEEL FLANGES NOT TO EXTEND LESS THAN ONE INCH ABOVE SHOULDER.



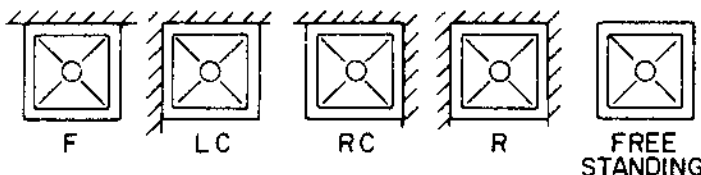
**PERSPECTIVE**



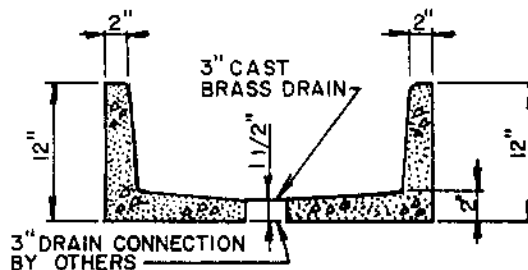
**PLAN**



**OPTIONS**



**STYLES**



**SECTION**

**OPTIONS:**

<b>TILING FLANGE</b>	<b>STAINLESS STEEL CAPS</b>
1F (1 FLANGE)	1SS (1 CAP)
2F (2 FLANGES)	2SS (2 CAPS)
3F (3 FLANGES)	3SS (3 CAPS)
	4SS (4 CAPS)

**IMPORTANT**

THIS IS AN APPROVAL DRAWING, ALL DIMENSIONS ARE TO BE VERIFIED AND AN APPROVED COPY OF THIS PRINT IS TO BE RETURNED TO CREATIVE INDUSTRIES TERRAZZO PRODUCTS BEFORE PRODUCTION CAN PROCEED.

MOPRECEPTOR APPROVAL					
MODEL NUMBER	A	B	C	D	E
MC2424-12	24"	24"	12"	12"	
MC3030-12	30"	30"	15"	15"	
MC3232-12	32"	32"	16"	16"	
MC3636-12	36"	36"	18"	18"	
MC3624-12	36"	24"	18"	12"	
					MODEL NO.
					SIZE REQUIRED
					JOB
					ARCHITECT
					ENGINEER
					NO. REQUIRED
					APPROVED BY
					DATE

**CREATIVE INDUSTRIES TERRAZZO PRODUCTS, INC.**

1753 NORTH SPAULDING CHICAGO, ILLINOIS 60647 (773) 235-9088 OR 235-9089